




Technical specifications and options

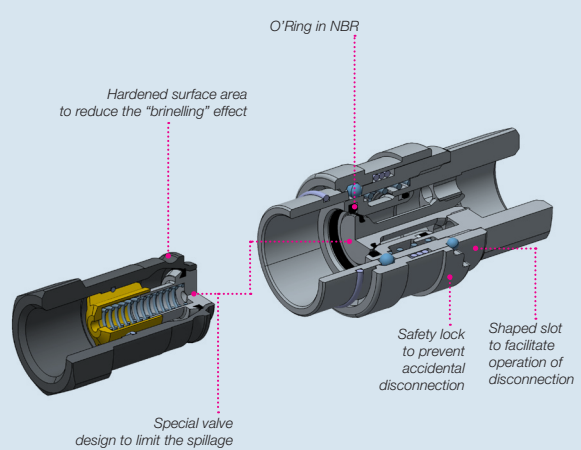
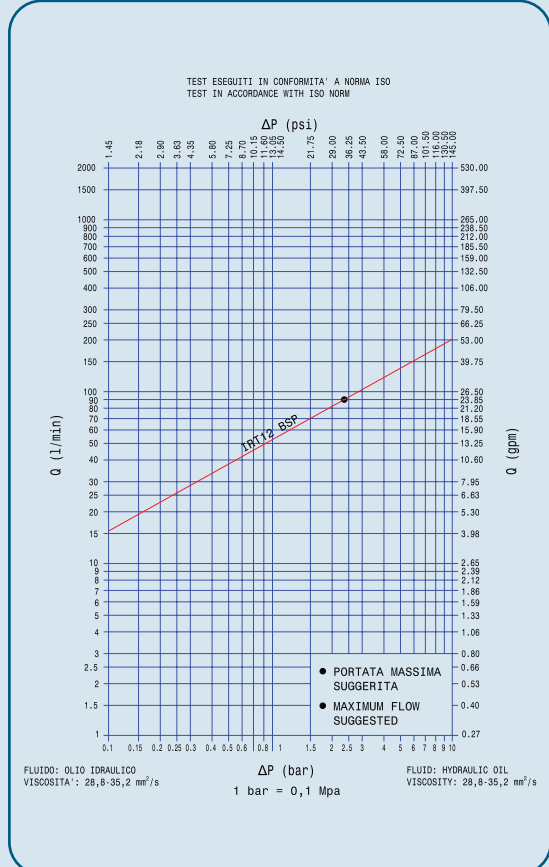
 Interchange With similar couplings	 Sealing description Nitrile NBR	 Connection system Push
 Available sizes 1/2"	 Material/treatment Carbon steel / Cr3	 Available threads BSP - NPT
 Operating pressure up to 175 bar	 Locking mechanism Locking ball	 Flow rate up to 90 l/min
 Temperature -20°C / +100°C	 Valving style Flat face no spill	 Connection under pressure Connection: Not allowed Disconnection: Not allowed

Benefits

- Special valves ensure a good seal of the coupling disconnected and minimize spillage of fluid.
- Locking sleeve guards against accidental disconnection, provided with slot to facilitate the use during operations.
- Shape of internal parts is designed to reduce turbulence and pressure drop.
- Minimal fluid loss during disconnection eliminating environment pollution.
- Minimal air inclusion during connection.
- Good resistance to pressure impulses and high flow rates.
- Compact slim design.
- Safe and simple to use.

How to use

- Before to connect, clean the mating surface of the couplings to avoid dirt inclusion in the circuit.
- To connect push the male half towards the female half or vice versa.
- After connection turn the external sleeve to engage safety lock function, to prevent accidental disconnection.
- To disconnect turn the external sleeve until the sleeve lock notch match the safety lock ball and push back the sleeve.



MAIN APPLICATIONS



Performances

Size	Series	Max. flow suggested		Connect force		Disconnect force		Spillage*	Max. operating pressure						Burst pressure									
		I/min	GPM	N	lbf	N	lbf		ml	Coupled		Male		Female		Coupled		Male		Female				
Inch									MPa	psi	MPa	psi	MPa	psi	MPa	psi	MPa	psi	MPa	psi	MPa	psi		
1/2	IRT12	90	23,85	146	32,8	36	8,1	0,07	17,5	2538	17,5	2538	10	1450	70	10150	70	10150	40	5800				

* Spillage is an indicative value of the fluid loss per couple-uncouple cycle (according to ISO norm test method).

Temperature range:

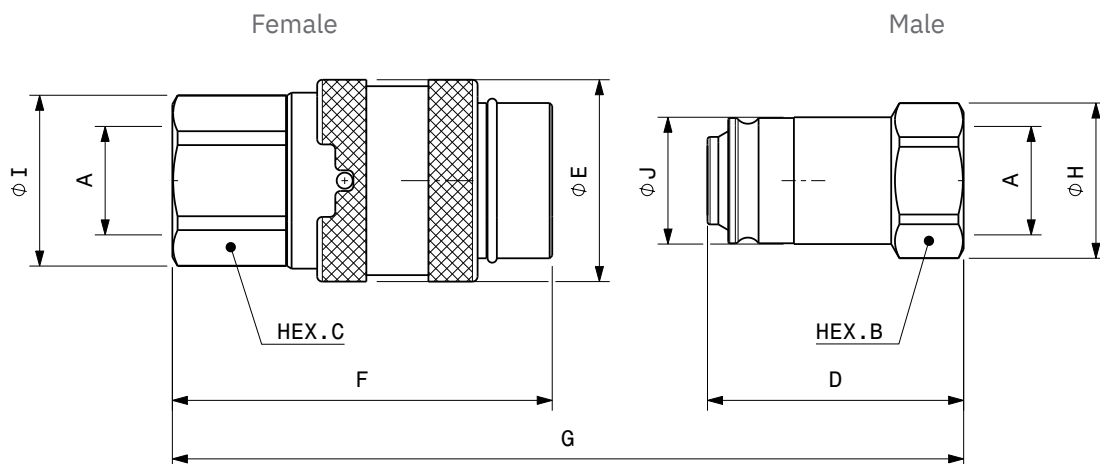
Seals in NBR (Nitrile): from -20 °C to +100 °C (from -4 °F to +212 °F).

Please read carefully Instructions and warnings for proper selection of the products.

Tests performed:

The couplings have been tested at max. operating pressure for 100,000 impulses according to ISO norm test method.

Overall dimensions



Port description: FEMALE THREAD BSPP (ISO 1179-1)

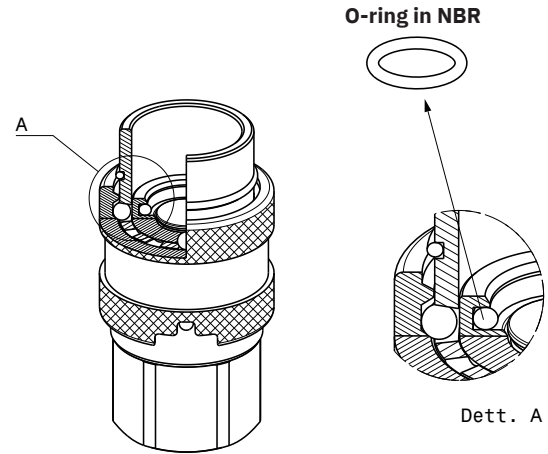
Size	Descriptive code	Item code	Port (A)	Overall length		Length		Hex			Diameter		Diameter		Weight					
				mm	inch	mm	inch	mm	inch	mm	inch	mm	inch	Kg	Ibs					
1/2	F IRT12 BSP	Female 800200030	1/2	G	94,5	3,72	F	73,4	2,89	C	30	1,18	E	39	1,54	I	39	1,54	0,33	0,73
1/2	M IRT12 BSP	Male 800200015	1/2				D	49,5	1,95	B	27	1,06	H	30	1,18	J	24,2	0,95	0,10	0,22

Port description: FEMALE THREAD NPT (ANSI B1.20.1)

Size	Descriptive code	Item code	Port (A)	Overall length		Length		Hex			Diameter		Diameter		Weight					
				mm	inch	mm	inch	mm	inch	mm	inch	mm	inch	Kg	Ibs					
1/2	F IRT12 NPT	Female 800201016	1/2	G	94,5	3,72	F	73,4	2,89	C	30	1,18	E	39	1,54	I	39	1,54	0,33	0,73
1/2	M IRT12 NPT	Male 800201001	1/2				D	49,5	1,95	B	27	1,06	H	30	1,18	J	24,2	0,95	0,10	0,22

Spare parts

Repair kit / OR+BK		
Item code	Descriptive code	Part number
1/2	SPARE KIT OR NBR F IRT12	815701323



⚠ WARNING

A defect, a wrong choice or an improper use of products, can cause injury to persons, animals and objects.
 Never connect or disconnect with dynamic pressure (e.g. pump on).
 Do not use the female coupling disconnected with high impulse pressure.
 Do not couple-uncouple with flow in the circuit.
 Do not couple-uncouple when the temperature inside of the circuit is higher than 80 °C (176 °F).
 Check the maximum allowable working pressure of the port in use.
 Make sure that the medium used is compatible with seal and material as indicated for each series.
 In case of doubt please contact Stucchi Technical Support.
 The interchangeability is mentioned under the assumption that the manufacturer of the considered products has not changed any dimension.
It is mandatory to carefully read and closely follow the instructions before selecting or using any Stucchi products.
Always refer to the version uploaded in the Instructions and warning section of stucchigroup.com website for the latest release.
For specific, product related, instructions, please contact Stucchi technical service.