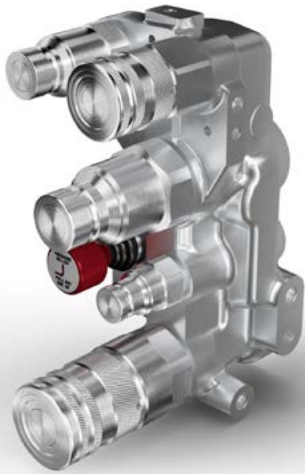


# SATURN5SERIES

INTERCHANGE > ISO 16028 (for the couplings)



Easy CUP



## TECHNICAL FEATURES AND OPTIONS

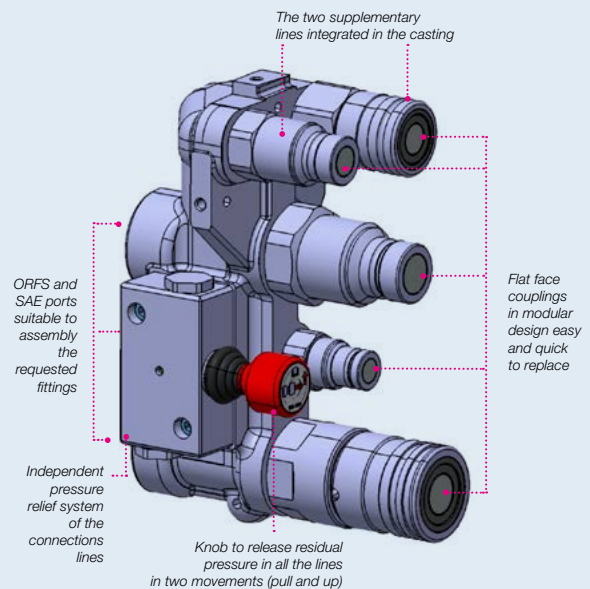
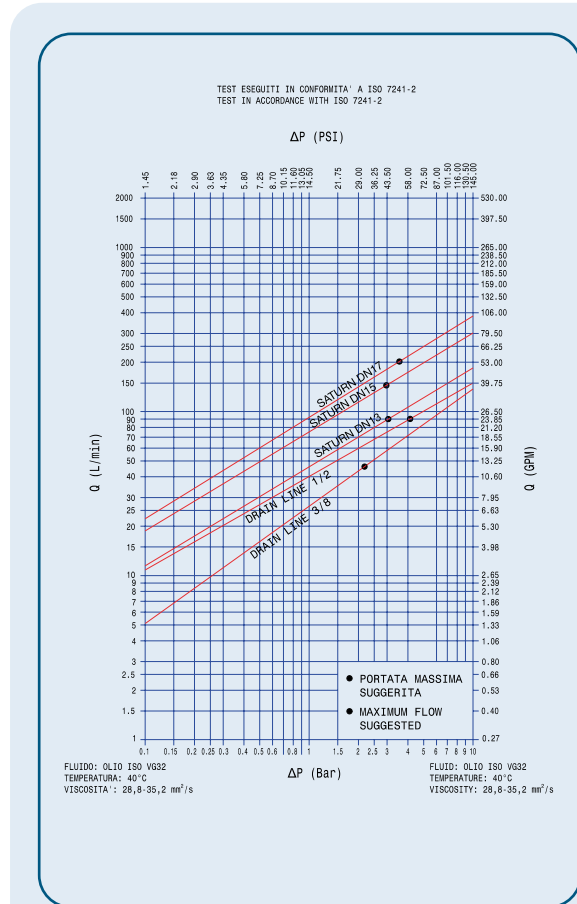
<b>Interchange</b> ISO 16028 (for the couplings)	<b>Sealing description</b> Nitrile NBR	<b>Connection system</b> Push
<b>Available sizes</b> from 1/2" to 3/4"	<b>Material/treatment</b> Carbon steel /Cr3	<b>Available threads</b> SAE - JIC
<b>Operating pressure</b> Up to 350 bar	<b>Locking mechanism</b> Locking ball + Safety Lock	<b>Flow rate</b> Up to 200 l/min
<b>Temperature (°C)</b> -20°C / +100°C	<b>Valving style</b> Flat face	<b>Connection under pressure</b> Connection: One side - Both sides if use with APM/AHD (see Benefits). Disconnection: Allowed (see Benefits).

## BENEFITS

- Stucchi design pressure relief system completely independent of the connections prevents accidental release of pressure during the operation.
- The two supplementary lines integrated in the casting make the Saturn HF a simple product to be assembled on the machines, thus reducing installation costs.
- User friendly pressure relief system (knob) allows the release of residual pressure in all the coupling just by two movements (pull and up) for easy and safe connection and disconnection.
- Please use in conjunction with APM series or A-HD series to be able to connect with the matching side (attachment) under residual pressure.
- Low cost field replacement spare kits for couplers and valve.
- Flat face is easy to clean, reducing the inclusion of contamination to the hydraulic circuit.
- Minimal fluid spillage during disconnection, reducing fluid loss to the environment.
- Minimal air inclusion during connection.
- Internal valve design creates minimal pressure drop, maintaining circuit efficiency in the system.
- Good resistance to pressure impulses.
- Compact slim and flexible design (possible to use different sizes of couplings).
- Safe and simple to use.

## HOW TO USE

- Before to connect, clean the mating surface of the couplings to avoid dirt inclusion in the circuit.
- Drain the residual pressure pulling the knob out and up to drain the residual pressure of all the couplings.
- To connect push the male half towards the female half or viceversa.
- After connection turn the external sleeve to engage safety lock function, to prevent accidental disconnection.
- To disconnect pull back the sleeve of the female.
- In case of residual pressure, before uncoupling pull the knob out and up to drain the residual pressure of the couplings.



## MAIN APPLICATIONS



CASTING

## PERFORMANCES

Size		Series/Size	Max. flow suggested		Spillage*
in	mm (ISO)		l/min	gpm	
1/2	12,5	SATURN 5 DN13	90	23,85	0,02
3/4	19	SATURN 5 DN17	200	53	0,03

Size	Series/Size	Max. operating pressure						Max. residual pressure			
		Coupled		Male		Female		Male		Female	
in		MPa	psi	MPa	psi	MPa	psi	MPa	psi	MPa	psi
1/2	SATURN 5 DN13	35	5075	33	4785	33	4785	25	3625	25	3625
3/4	SATURN 5 DN17	35	5075	33	4785	33	4785	25	3625	25	3625

\* Spillage is an indicative value of the fluid loss during disconnection (according to ISO norm test method).

### Different possible configurations:

See specific table in the following page.

Saturn 5 can be configured with VEP, VP, VEP-HD cartridges upon request.

### Temperature range:

Seals in NBR (Nitrile): from -20 °C to +100 °C (from -4 °F to +212 °F).

Please read carefully Instructions and warnings for proper selection of the products.

### Tests:

The Saturn Block have been tested at impulse with max. operating pressure for 1.000.000 impulses according to ISO norm in connected position.

## WARNING

A defect, a wrong choice or an improper use of products, can cause injury to persons, animals and objects.

Connect under pressure products are suitable to be connected under residual (static) pressure.

Never connect or disconnect with dynamic pressure (e.g. pump on).

Do not relieve pressure:

- When the attachment is not in the rest position
- During operation of the attachment (due to danger of unexpected movement of the attachment)

Connection with residual pressure (pressure trapped in the circuit) allowed with one side to drain.

Do not use the female coupling disconnected with high impulse pressure.

Do not couple-uncouple with flow in the circuit.

Do not couple-uncouple when the temperature inside of the circuit is higher than 80 °C (176 °F).

Check the maximum allowable working pressure of the port in use.

It is important to limit contamination in the circuit to avoid compromising the function of the internal valves.

Make sure that the medium used is compatible with seal and material as indicated for each series.

In case of doubt please contact Stucchi Technical Support.

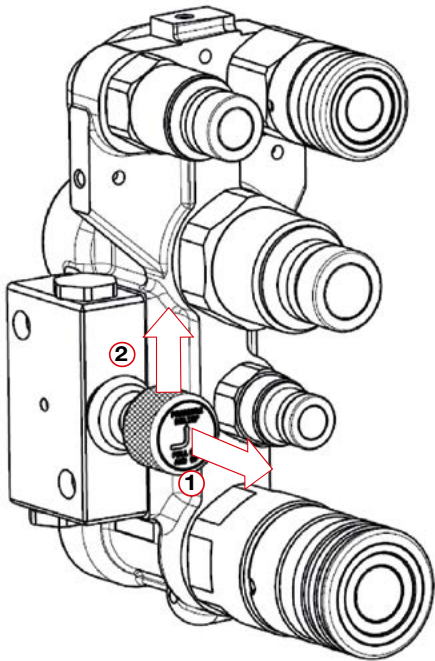
The interchangeability is mentioned under the assumption that the manufacturer of the considered products has not changed any dimension.

**It is mandatory to carefully read and closely follow the instructions before selecting or using any Stucchi products.**

**Always refer to the version uploaded in the Instructions and warning section of [stucchigroup.com](http://stucchigroup.com) website for the latest release.**

**For specific, product-related, instructions, please contact Stucchi technical service.**

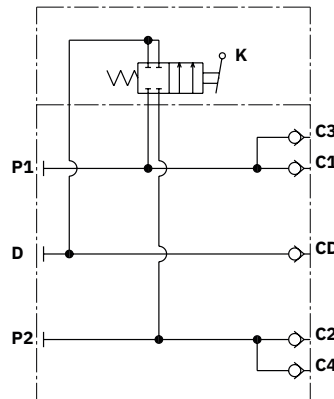
## HOW IT WORKS



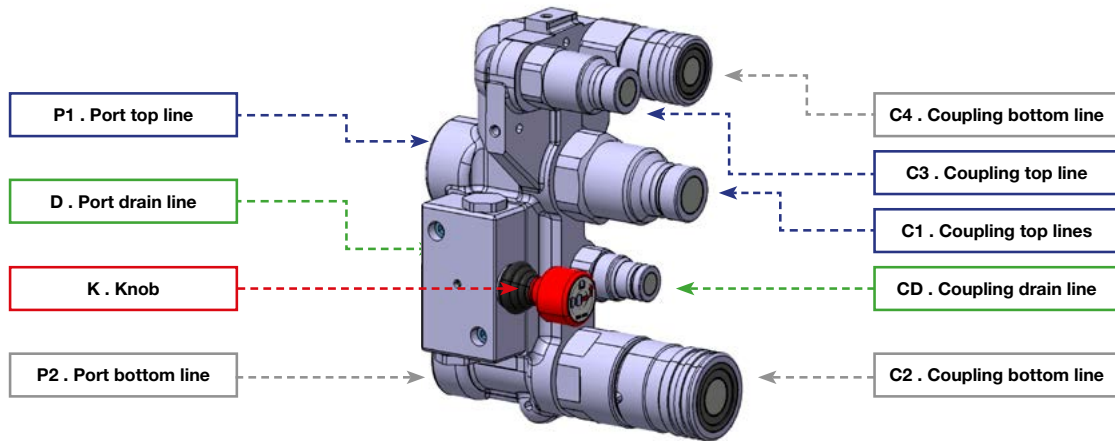
To release the pressure:

- ① Pull the lever
- +
- ② Push up to release the pressure in all the lines

## HYDRAULIC CIRCUIT

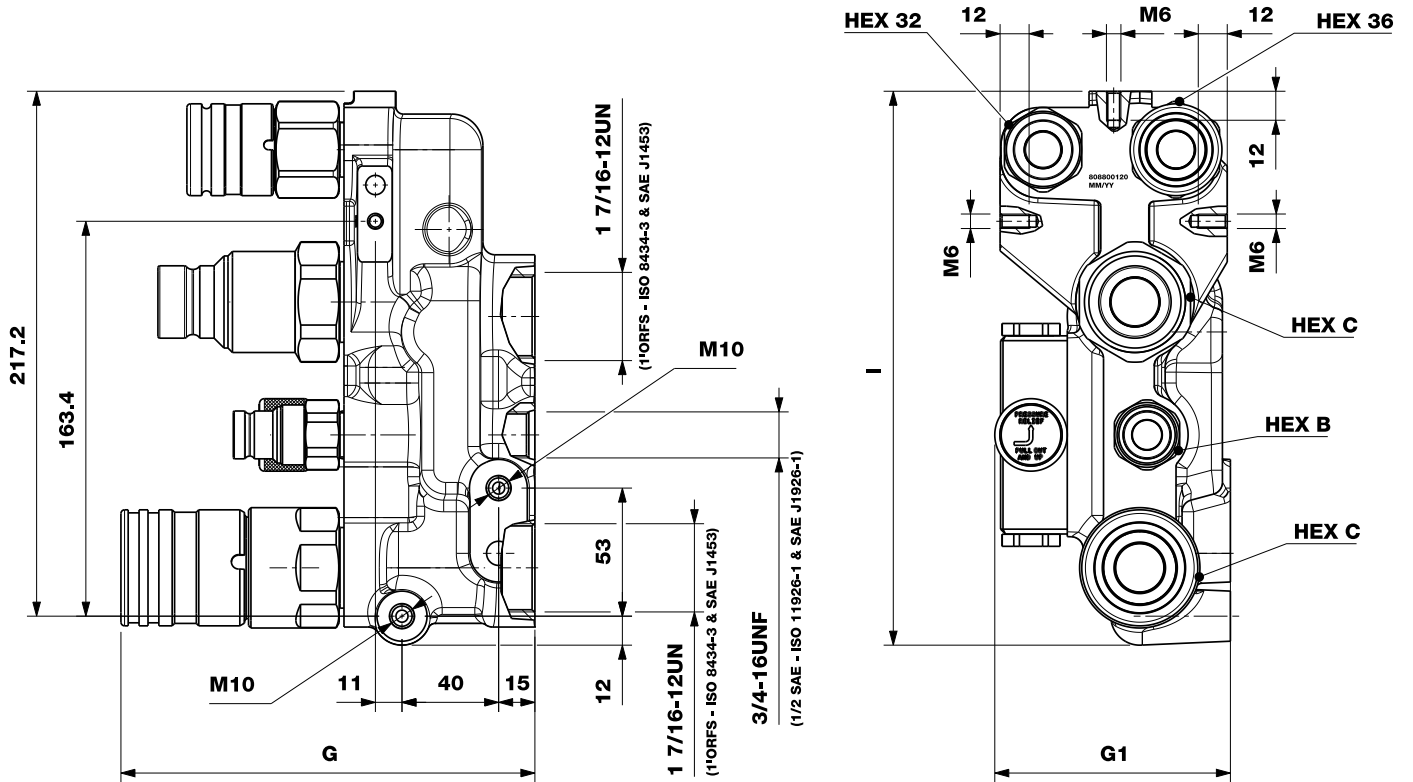


## HOW TO ORDER, PRODUCT DEFINITION



Descriptive Code	Item Code	C1. Coupling top line	C2. Coupling bottom line	C3. Coupling top line	C4. Coupling bottom line	CD. Coupling drain line
SATURN 5 MF A17-MF A13-M A9	808800120	Male 3/4	Female 3/4	Male 1/2	Female 1/2	Male 3/8

## OVERALL DIMENSIONS



Descriptive Code	Length		Length		Length		Hex		Hex		Weight						
	mm	in	mm	in	mm	in	mm	in	mm	in	kg	lb					
SATURN 5 MF A17-MF A13-M A9	G	171,3	6,74	G1	97,5	3,84	I	229,2	9,02	C	46	1,81	B	27,0	1,06	7,84	17,28

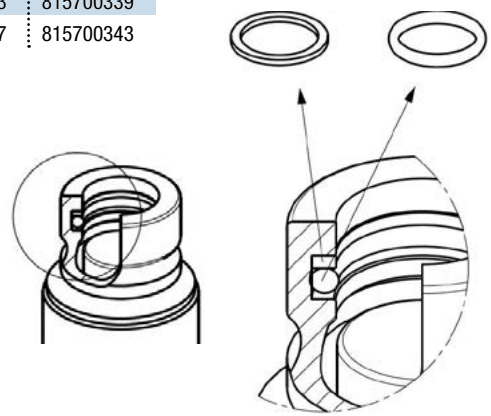


## SPARE KIT SEAL FOR MALE

Repair kit / OR+BK		
Body Size	Description	Part Number
3/8"	M A9 (drain line)	815700337
1/2"	MALE DIN13	815700339
3/4"	MALE DIN17	815700343

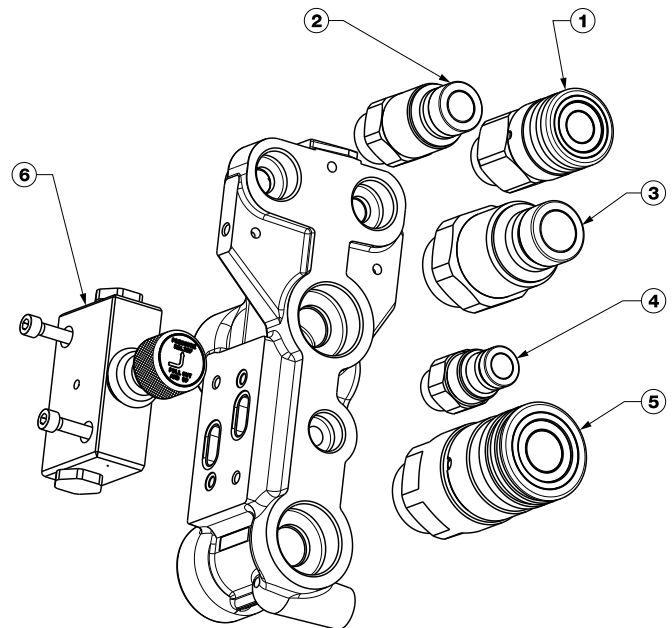
Backup ring  
(Teflon®)

O-ring



O-Ring in NBR  
BackUp in Teflon®

## REPAIR KIT FOR SATURN HF SERIES



Repair kit			
Coupling Size	Descriptive Code	Part Number	Legend
1/2"	F A13HDS 5/8 ORFS	<b>808313042</b>	1
1/2"	M A13HD 5/8 ORFS	<b>808313037</b>	2
3/4"	M A17 1 ORFS	<b>801313011</b>	3
3/8"	M AS9 1/2 ORFS (drain line)	<b>806613001</b>	4
3/4"	F A17 1 ORFS	<b>801313010</b>	5
na	REPAIR KIT VALVE GROUP SATURN 5	<b>815701278</b>	6